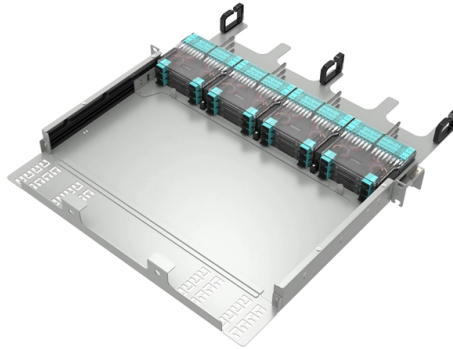


## What does CT stand for in a cable tray



### Overview

Understanding the "CT" Marks on single conductors for use in Cable Tray applications, where applicable. In your local language, CT stands for Cable Tray. Utilizing CT as an abbreviation enhances communication by providing a concise and efficient method, ultimately conserving time and space. This. EAE Cable Tray System product E-Line CT is being manufactured as a hot dipped product that is used in heavy or medium duty application with its perforated design. Al or Alum wire - Alum is short for aluminum. It provides a solution for installers who are looking for an economical support option, only require a shallow cable laying depth or need a low profile system, but still from a product that maintains excellent load. What does CT stand for?

We have 163 other meanings of CT in our Acronym Attic It has since grown to become the UK's largest manufacturer of steel wire cable tray.



## Article Content

The Ultimate Guide to Tray Cables: Types, Applications and

When it comes to powering, automating and protecting facilities—from factories and petrochemical plants to data centers and high-rises—the right cable makes all the difference. Among

CT Cable Tray

The abbreviation CT stands for Cable Tray and is mostly used in the following categories: Cable, Tray, Product, Power, Manufacturer. Whether you're exploring these categories or simply seeking a quick

Cable Tray Rating Conductors | Eng-Tips

(1) Conductors for use in cable trays shall be listed in Table 19 and, except as permitted in Subrules (2) and (3), shall have a continuous metal sheath or interlocking armour.

Cable tray

In the electrical wiring of buildings, a cable tray system is used to support insulated electrical cables used for power distribution, control, and communication. Cable

Tray-Rated Cable 101

When should you use a tray-rated cable? Tray cable is applied in many different industrial plant expansions, automotive plants, tray wiring, wind energy, machine tool, forestry equipment, oil and

E-Line CT Cable Tray

EAE Cable Tray System product E-Line CT is being manufactured as a hot dipped product that is used in heavy or medium duty application with its perforated design.

CT cable tray system

CT cable tray system CT cable trays are available in different heights and designs, from premium to basic. We have several vertical models. Discover our different

Cable Tray (CT)

The English name of the cable tray is “Perforated Cable Tray” or “Cable Tray”. It is intended as a system for supporting, installing, and protecting cables, power distribution conductors, insulating products,

Cable Tray Technical Guide A practical guide to product selection and ...

Cable Tray Technical Guide A practical guide to product selection and installation This guide for engineers and installers has been developed by ABB as a practical reference regarding cable tray

## Contact Us

For more information, pricing, or custom solutions, please contact us:

Website: <https://www.activa.net.pl>

Email: [sales@activa.net.pl](mailto:sales@activa.net.pl)

Phone: +48 662 748 193

Address: ul. Cybernetyki 7B, 02-677 Warsaw, Poland

This document is for informational purposes only. Specifications subject to change without notice.

