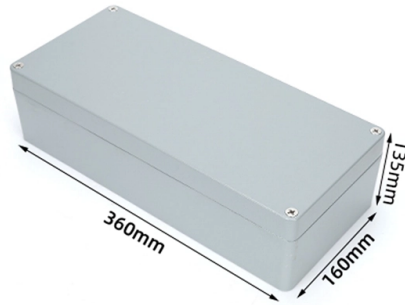


The bottom edge of the cable tray is attached to the wall



Overview

The end of the cable tray is attached to the wall or the floor with two end brackets (RÄF). The end bracket is fixed to the shelf using the screw set included with the end bracket. Need more information?

maintain spacing or to keep cables in place when the tray is ect the minimum bend radius for cables as they exit the bottom of the cable tray. A rung spacing of 6 to 9 inches (150 to 230 mm) is preferable when the cable tray cont d for instrumentation and control applications that require. The systems are installed on ceilings, walls or floors. Various galvanisation surfaces can be applied to improve corrosion protection. To protect the insulation of the. The standard bottom configuration for ventilated trough cable tray is a corrugated bottom with 27/8 inch bearing surfaces - 6 inches on centers and 21/4 inch x 4 inch ventilation openings.

Article Content

Guide to cable support systems

By contrast, a support element is constructed to support the previously described cable support lengths and fit-tings mechanically and to connect them to the structure, such as a room ceiling, a wall, the

FAQ | Cable Tray Institute

Cable Tray System FAQs National Electrical Code Question: We have a customer who would like to install the majority of cable tray in his new industrial facility in what I call an "Edge-Wise" orientation.

How do I mount a cable tray to the wall and floor using an end bracket ...

The end of the cable tray is attached to the wall or the floor with two end brackets (RÄF). The end bracket is fixed to the shelf using the screw set included with the end bracket.

Cable Tray Technical Guide A practical guide to product selection and ...

SOLID-BOTTOM CABLE TRAY Providing additional cable protection, solid-bottom cable tray is sometimes preferred to support and protect numerous small instrumentation and control cables.

Mesh cable tray systems

1 4 Correct use The mesh cable tray systems support and route all types of cables. Depending on the type and version of mesh cable tray, as well as the corrosion protection used, the mesh cable tray

Cable tray manual

Per the 2002 NEC® solid bottom cable trays are now permitted to support single conductor cables only in industrial establishments where conditions of maintenance and supervision ensure that only

Cable Tray Manual: NEC Article 392 Guide

For installations where the cables exit the bottom of the cable tray and the system is subject to some degree of vibration, it is advisable to use B-Line Trough Drop-Out

Cable Tray SHIB NAL

Cable trays are not raceways, but they are treated as a structural component of a facility's electrical system. Cable trays are a part of a planned cable management system to support, route, protect and

Cable Tray Flashcards | Quizlet

Occur when the load applied causes the fibers on the tension side (bottom edge) of the rung to stretch and permanently deform. Simultaneously, fibers on the compression side (top edge) are permanently

CABLE TRAY SYSTEMS GUIDE

Hubbell's NEXTFRAME® Ladder Tray is the effective and widely used cable runway that supports and delivers bundles of cable between cabinets, racks, and closets, along walls, and suspended from

Guide to cable support systems

First, the wind pressure applied horizontally to the side wall of the cable tray is calculated. The pressure is calculated by multiplying the wind gust velocity pressure, the side height, the force coefficient, the

NEC Article 392: Cable Tray Systems

It provides rules for acceptable wiring methods that can be installed in cable trays, including conditions for use. It addresses uses permitted and not permitted for

Best Practice Guide to Cable Ladder and Cable Tray Systems

Cable ladder systems and cable tray systems are designed for use as supports for cables and not as enclosures giving full mechanical protection. They are not intended to be used as ladders, walk ways

Best Practice Guide to Cable Ladder and Cable Tray Systems

Cable ladders and cable trays should be mounted far enough off the floor or roof to allow the cables to exit through the bottom of the cable ladder or cable tray.

Samsung Galaxy S24 Ultra Slot Next to Charging Port? Here's Exactly ...

If my Samsung Galaxy S24 Ultra's charging port is damaged, does replacing just the flex cable near the side slot fix it? Click the image to view the product Yes if your issue stems from physical damage or

Cable Tray Technical Guide A practical guide to product selection and ...

Cable tray is considered to be a system. It must provide continuous support for cables, and the electrical continuity of the cable tray system must be maintained.

Contact Us

For more information, pricing, or custom solutions, please contact us:

Website: <https://www.activa.net.pl>

Email: sales@activa.net.pl

Phone: +48 662 748 193

Address: ul. Cybernetyki 7B, 02-677 Warsaw, Poland

This document is for informational purposes only. Specifications subject to change without notice.

