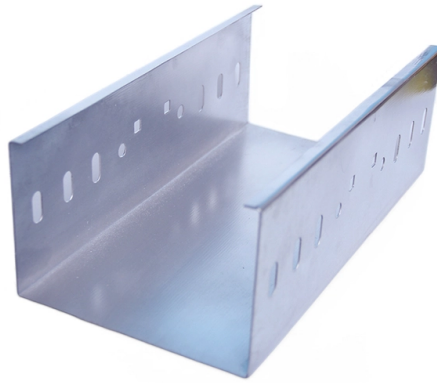


## Optical cable trench depth



### Overview

Bury cables from 12-36 inches (or 30-90 cm) deep. Where plant life, sidewalks, and other utilities already disrupt earth, it's safer to bury at as little as 24 inches or 60 cm, using protective conduits to limit the likelihood of damaged cables by inexperienced maintenance or. Bury cables from 12-36 inches (or 30-90 cm) deep. 2 meters (3-4 feet) deep to reduce the likelihood of accidentally being dug up. This. While local codes and soil conditions dictate specific requirements, general industry guidelines are: Standard Residential/Commercial Areas: 24 to 36 inches (60 to 90 cm) deep. However, simply hitting this depth isn't enough to guarantee your network survives. Factors like the. Fiber optic cables transmit data as light pulses through a core, offering bandwidths up to 400 Gbps via wavelength-division multiplexing (WDM). Burying these cables protects them from physical damage, weather, and unauthorized access, but the depth varies based on location, cable type, and local. Fiber optic cables are typically buried between 12 and 36 inches (30-90 cm), depending on installation environment, soil conditions, and load requirements. In high-load areas such as roads or backbone routes, burial depth can reach 48 inches (120 cm) or more. For broader context on underground.

## Article Content

### Buried Installation of Optic Fiber Cable

If the cable is placed with a trencher, a narrow trench is dug and covered with a bed of fine granular soil, several inches thick to serve as a protective bed for the cable to cushion it from any sharp rocks at

(EXTRACT FROM TECHNICAL SPECIFICATIONS OF CONTRACT)

If under unavoidable circumstances, the excavation is to be done between the taxi track and runway, it shall be done to the full depth just before laying the cables and in the presence of the site-in charge's

### How Deep Is Fiber Optic Cable Buried? (2025 Nec Standards & Guide)

How Deep Should Fiber Optic Cable Be Buried? (2025 Nec Standards & Guide) The short answer, based on general industry standards and the National Electrical Code (NEC), is that fiber optic cable

### Optical fibre cable installation techniques

L.49: Micro-trench installation technique This Recommendation describes the so-called micro-trenching technique, that allows installing optical cables at a shallow depth, in small grooves.

(EXTRACT FROM TECHNICAL SPECIFICATIONS OF CONTRACT)

Trenches for Optical Fiber cable shall be dug to a depth of 1.65 meters. The width of the trench shall be adequate at the bottom to accommodate cables and their protection. Normally width of approx. 250

### How Deep To Bury Fiber Optic Cable

How Deep to Bury Fiber Optic Cable: Guidelines and Best Practices Burying fiber optic cables is a crucial step in ensuring the durability and longevity of a fiber optic network. The depth at

### How Deep Are Fiber Optic Cables Buried? Detailed

UV-Resistant Outer Jacket: Essential for any portion of cable exposed above ground before burial. For high-quality, reliable options, explore our range of direct-buried

### How Deep Is Fiber Optic Cable Buried? (2025 Nec

The short answer, based on general industry standards and the National Electrical Code (NEC), is that fiber optic cable is typically buried between 24 inches (60 cm)

### How Deep to Bury Fiber Optic Cable — Depth Guide | TTI Fiber

General Guidelines: In most cases, burying fiber optic cable at a depth of 24 to 36 inches (60 to 90 cm) is considered adequate. This depth provides reasonable protection against most

#### GENERAL INFORMATION

Once the cable has been laid on the backfill, the trench should be filled in with clean backfill and then earth, with a warning tape placed 12 inches directly above the fiber optic cable.

How Deep Is Fiber Optic Cable Buried? (2025 Nec Standards& Guide)

Wondering how deep is fiber optic cable buried? We explain the NEC requirements (usually 24-30 inches) and why you need Armored Cable for direct burial projects.

The FOA Reference For Fiber Optics -Outside Plant

It's immensely important for trenches to be excavated to such a depth that the crown of the duct has at least 800mm (32 inches) of backfill cover, in all soil conditions,

Microtrenching and Street Works: An advice note for Local Authorities ...

Under the right circumstances the technique has the potential for low-impact deployment methodology in which fibre optic cable and sometimes conduits are laid into a slot-cut trench less than 20mm wide,

Instal 04 Buried Cable Installation Practices Iss3

1.0 GENERAL 1.01 This procedure provides general information for the installation of Prysmian fiber optic cables in direct buried applications. The methods described are intended for guideline use only,

## Contact Us

For more information, pricing, or custom solutions, please contact us:

Website: <https://www.activa.net.pl>

Email: [sales@activa.net.pl](mailto:sales@activa.net.pl)

Phone: +48 662 748 193

Address: ul. Cybernetyki 7B, 02-677 Warsaw, Poland

This document is for informational purposes only. Specifications subject to change without notice.

