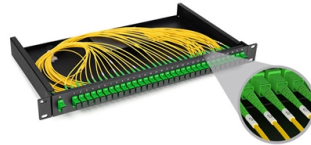


## Optical Distribution Box Mounting Test



### Overview

OTDR Testing – Use an Optical Time Domain Reflectometer (OTDR) to validate splice connectivity and check for signal loss issues. Link Loss Budget – Measure link loss between the central office and FDB as well as FDB to the customer premises to confirm it is within specifications. ication and relevant standards over the range of optical wavelengths from 1260nm to 1625nm. Suppliers shall provide information on the likely change in pe fficiently handled and. A fiber optic distribution box, also known as a fiber optic terminal box or termination box, is a device used to connect and manage fiber optic cables within a network. Our ruggedized portfolio delivers reliable, mission-ready fiber. Wherever glass fiber connections have to be installed in a harsh environment - in offices, industry or Fiber-to-the-Building/-Home customer access networks - high demands are made on the value and flexibility of the distributor housing and easy access whilst installaton and maintenance.



## Article Content

### 13-SDMS-06 REV. 00 MATERIAL SPECIFICATION FOR PASSIVE

This document specifies the minimum technical requirements for design, engineering, construction, manufacture, inspection, testing and performance of the passive components used to manage the

#### Optical Distribution Box ODB54

ODB 54 Optical Distribution Box IP54 Wherever glass fiber connections have to be installed in a harsh environment - in offices, industry or Fiber-to-the-Building/-Home customer access networks - high

#### INDOOR DISTRIBUTION TERMINAL BOX

The optical parameters shown in the table above are default values, and can be customized according to requirements. The color of the product may vary and is for reference only.

#### Optical Distribution Box ODB54

Whether it will be used as splice storage or as distributor housing, there is enough space in the rugged plastic ODB 54 housing for accommodating up to 24 glass fiber ports.

#### Dinrail Distribution And Enclosure Box, Din Rail Junction

The DIN rail terminal box is mainly used for connection and storage between optical fiber and cable and equipment pigtail, which can meet the customer's use in the

#### Optical Distribution Box

It is used between the trunk cable optical distribution cabinet and the fiber distribution box to solve the problem of insufficient number of cables in the trunk transfer box and extends the trunk cable to the

#### Fiber Management OPTICAL DISTRIBUTION FRAME (ODF)

MODEL ODF-C220 Fiber-Rex ODF is a high capacity, high-density fiber distribution frame, suitable for the composition and distribution of fibers in optical access network to achieve the fiber optic lines

#### Optical Distribution Boxes - PPC Broadband | Product Catalog

Optical Distribution Box (ODB-96): This outdoor-rated wall mount enclosure is designed for FTTx networks in single dwelling, multi-dwelling and multi-tenant applications for up to 96 subscribers. The

#### Fiber Optic Distribution Boxes: The Key to Seamless

The process involves site preparation, secure mounting, careful fiber termination, and thorough testing using tools like optical time-domain reflectometers (OTDR)

Optical Distribution Frame (ODF): The Complete Guide for Fiber

Comprehensive guide to Optical Distribution Frames (ODF) for data centers. Learn ODF types, installation best practices, fiber management, patch panels, MPO/MTP solutions, and high

LW-ODB-2D Optical Distribution Box

LW-ODB-2D Optical Distribution Box integrates fiber cable fixation, storage, splicing, and distribution in an outdoor and indoor wall mounting box. Features: Water

Fiber Optic Distribution Box FAQs

Grounding testing: test the grounding resistance of the metal shell to ensure safety during use. Fiber optic distribution boxes play a crucial role in the distribution of

Datasheet POR 48 Wall-mounted Optical Distribution Box

Wall mounted fiber optical box is designed for the placement of up to 48 optical connectors indoor. Optical cables can be lead in/out from upsite or downsite. Adapters plate is selectable and splicing

Fiber Distribution Box.pub

Fiber Distribution box contains the shell, the internals (supporting frame, set fiber disc, fixing device) and optical fiber joint protective element. Prominent advantages of fiber termination box lie in efficient

Optical Distribution Box

Optical Distribution Box - Fiber Optic Cabling Management Optical Distribution Point (ODP) or Optical Distribution Box 8 Cores LW-ODB-8D Description: Linkwell's

Optical distribution frames and patch panels

Supporting more fiber with lower cost and higher flexibility, Technetix offers a variety of wall, floor and rack-mounted optical distribution frames (ODF) and patch panels.

Wall Mounted Enclosure, ODB Series 100A Spec Sheet

The front face of the swing panel holds one or two SC duplex or LC quad adapters and provides fiber management for the output cables. The ODB 100A can be securely mounted to a flat surface with 4

Optical Distribution Frames/Patch Panel

Optical Distribution Frames/Patch Panel Vladimir Grozdanovic An optical Distribution Frame (ODF) or patch panel is the starting point for optical cables, most commonly found in rack cabinets in Head

How to install optical fiber distribution box□

1. Fix the optical fiber distribution box: - Secure the optical fiber distribution box to the predetermined position using expansion bolts. Ensure that the box is installed firmly and horizontally, and the

## Contact Us

For more information, pricing, or custom solutions, please contact us:

Website: <https://www.activa.net.pl>

Email: [sales@activa.net.pl](mailto:sales@activa.net.pl)

Phone: +48 662 748 193

Address: ul. Cybernetyki 7B, 02-677 Warsaw, Poland

This document is for informational purposes only. Specifications subject to change without notice.

