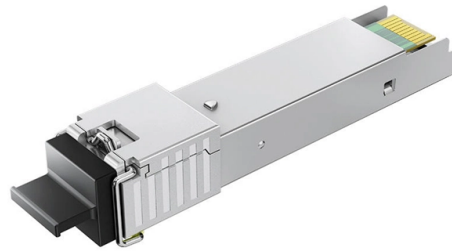


## Odc optical cable head



### Overview

An ODC connector (Outdoor Connector) is a ruggedized fiber optic interface designed for outdoor and harsh environments. It features waterproof sealing (IP67 / IP68), dust resistance, and a quick-lock coupling mechanism, making it ideal for FTTA, FTTH, and industrial. MASTERLINE Ultimate "plug & play" fiber optic cabling system with 12 fibers, featuring 1x Q-ODC12 input and 6x Q-ODC2 output for easy outdoor installation. They are widely used in telecom base stations, industrial networks, FTTA (Fiber to the Antenna), and military applications. These cable assemblies are widely used in telecommunications, data centers, and high-density environments where fast. ODC Fiber Cable (ODC Patch Cord) is a rugged outdoor fiber optic cable assembly terminated with ODC-2 or ODC-4 connectors.

## Article Content

what is ODC Connector in FTTA?

The odc connectors,together with the support optical cable,are becoming the standard interface specified in 3G,4G and WiMax Base Station remote radios and Fiber-to-the-Antenna

Introduction to ODC Connector

ODC Fiber Optic Cable System The ODC connectors, together with the support optical cable, are becoming the standard interface specified in 3G, 4G, and WiMax Base Station remote

ODC-2,ODC-4 Fiber Optic Patch Cord, Male

Product Description:ODC harsh environment cable assemblies are installation-friendly for fixed or mobile applications and transmit reliably data over long distances under severe environmental

ODC Fiber Optic Patch Cable

ODC cables usually consist of LC fiber connector and ODC socket/plug connector, and the ODC socket can be directly connected to ODC plug for a complete set. The ODC connector is a kind of harsh

ODC2 (Male)-ODC2 (Male) Connector SingleMode,2

ODC light cable assembly can be customized according to actual needs into different cable lengths and connector combinations, all standard fiber optic connectors

High-Performance ODC Cable Assemblies for Fiber Optic Networks

ODC (Optical Data Connector) cable assemblies are designed for high-performance optical communication systems, providing secure, reliable, and efficient fiber optic connectivity. These cable

ODC® Series

Dedicated to outdoor optical connections, ODC® connectors are available with MultiMode or SingleMode simplex or outdoor field cables. A quick-locking design with IP67 sealing and low loss

ODC Fiber Cable with ODC-2/ODC-4 Connector

ODC Fiber Cable (ODC Patch Cord) is a rugged outdoor fiber optic cable assembly terminated with ODC-2 or ODC-4 connectors. Engineered with IP68-rated sealed construction, screwed locking

ODC Fiber Optic Cables

Offering both multimode and single-mode fiber options, the ODC connector minimizes insertion loss while providing robust electromagnetic pulse protection and anti-electromagnetic interference.

MLUQ Head, 12F, SM, 1x Q-ODC12 input, 6x-Q-ODC

MASTERLINE Ultimate "plug & play" fiber optic cabling system with 12 fibers, featuring 1x Q-ODC12 input and 6x Q-ODC2 output for easy outdoor installation.

## Contact Us

For more information, pricing, or custom solutions, please contact us:

Website: <https://www.activa.net.pl>

Email: [sales@activa.net.pl](mailto:sales@activa.net.pl)

Phone: +48 662 748 193

Address: ul. Cybernetyki 7B, 02-677 Warsaw, Poland

This document is for informational purposes only. Specifications subject to change without notice.

