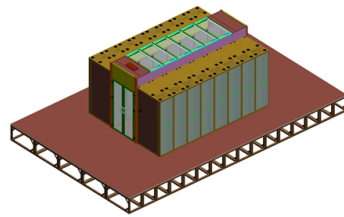


# Installation of distribution boxes without ground wire



## Overview

If your metal electrical box lacks a dedicated ground wire, your primary options are to bond it to an existing metal conduit system (if present and continuous) or to install a Ground-Fault Circuit Interrupter (GFCI) device, such as a GFCI receptacle or circuit breaker, to provide. If your metal electrical box lacks a dedicated ground wire, your primary options are to bond it to an existing metal conduit system (if present and continuous) or to install a Ground-Fault Circuit Interrupter (GFCI) device, such as a GFCI receptacle or circuit breaker, to provide shock protection. Why All Electrical Boxes Do Not Need a Ground Wire Not every electrical box in your home requires a ground wire — and in this video, I'll explain. It takes the incoming power and safely distributes it to different circuits throughout your building. However, the key to. That little red tail under the cable clamp means you have BX or MC feeding that box, that metal jacket is your ground. You can verify this with a meter between the box and the. Today, we're diving deep into the world of distribution box grounding, breaking down the standards, and shining a light on those sneaky mistakes that even experienced electricians sometimes make. Whether you're a seasoned pro or just starting out, this comprehensive guide will give you practical. I am exploring a way to install an outdoor outlet out of my main electrical panel but I couldn't find any visible ground bar (s) that the ground wires (in green color) can connect to, nor do I see a ground wire somewhere attached to any bars at all other than one that got attached to a bonding.

## Article Content

The Complete Guide to Distribution Box: Installation, Types & More

High-usage commercial and industrial installations may require more frequent inspections based on operating conditions and manufacturer recommendations. Can I add circuits to an existing

Installation requirements for distribution boxes

Installation of closed or explosion-proof electrical facilities; distribution box electrical components, meters, switches and lines should be arranged neatly, firmly installed, easy to operate.

Splice Electrical Wire Without Junction Box: A Step-by

Electrical Wire Splicing: Is a Junction Box Always Necessary? Ever wondered if you can legally and safely splice electrical wires without a junction box? It's a question

Grounding System Installation Standards for Distribution Boxes and ...

Whether you're a seasoned pro or just starting out, this comprehensive guide will give you practical insights into proper grounding techniques, with a special focus on how selecting quality materials

Should a Breaker Box Wire Neutral or Ground?

The installation requires that both the neutral and the equipment grounding conductors are run as separate, insulated wires from the main service panel to the subpanel. This dedicated four

The installation requirements for the distribution box

Introduction  
Understanding The Components of A Distribution Box  
Selecting The Right Distribution Box  
Site Preparation and Location Requirements  
Electrical Connections and Wiring  
Compliance with Standards and Regulations  
Conclusion  
Proper installation of a distribution box isn't just a technical requirement. It's a vital step in ensuring the safety and efficiency of your entire electrical system. Following best practices reduces the risk of electrical fires, power outages, and other hazards, protecting your property and keeping everyone safe. If you're looking for a reliable,...  
See more on eabel  
Published: Feb 7, 2025  
Reddit

No ground wire in electrical box (very old building) - Reddit

It's a self grounding device (meaning if the box is screwed into any grounded box, the device will be grounded) so you could just cap that device ground wire off with a

Summary of key points for construction and installation of distribution ...

The construction and installation points of distribution boxes and switch boxes are summarized as follows: 1. Select qualified products that meet national standards and safety requirements.

## CHAPTER METHODS AND MATERIALS

Chapter 2 was a bit of an uphill climb, because many rules had a kind of abstract quality to them. Chapter 3, on the other hand, gets very specific about conductors, cables, boxes, raceways, and fi

### How To Install A Ceiling Light With No Ground Wire

This free video clip demonstrates how to install a ceiling light without a ground wire in a metal electrical box connected to metal conduit. The video shows the process of installing a non

### Cautions and Requirements for Installation of

8. After installation, the residue in the distribution box should be cleaned up. When the distribution box is installed and constructed, some safety operation items

Size determination, installation method and wiring mode

The distribution box is the central hub of the home circuit and the general control of our daily power consumption. It is an indispensable electrical equipment. If there

### How To Ground A Metal Box Without A Ground Wire

If your metal electrical box lacks a dedicated ground wire, your primary options are to bond it to an existing metal conduit system (if present and continuous) or to install a Ground-Fault

## Contact Us

For more information, pricing, or custom solutions, please contact us:

Website: <https://www.activa.net.pl>

Email: [sales@activa.net.pl](mailto:sales@activa.net.pl)

Phone: +48 662 748 193

Address: ul. Cybernetyki 7B, 02-677 Warsaw, Poland

This document is for informational purposes only. Specifications subject to change without notice.

