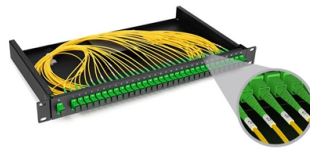


How to measure the standard height of a distribution box



Overview

Place the box in its normal standing position and measure from the bottom base straight up to the top edge. Height is the vertical dimension and should be measured after identifying length and width on the box base. 7 meters) high makes it easily accessible without the need to bend or stretch excessively. Volume = Length × Width × Height Example: If a shipping box has 16 inches length. How to Measure Width, Length, and Height Understanding box dimensions is essential whether you're involved in shipping, moving, or custom product packaging. Knowing how to measure a box accurately ensures you select the right size for your needs, avoid additional shipping costs, and optimize. According to standards, the height from the bottom edge of a distribution box to the floor is generally 1.5m, and for distribution boards, it should not be less than 1. This section explains the measurement points of the enclosures of distribution boards, switchboards, control panels, and cubicles (which require short delivery times and improved quality) as well as the problems related to these measurements.

Article Content

height of distribution board??

Hi guys just a quick one, we all know the height requirements of part p being between 450mm-1200mm for standard equipment, but ive never heard of a standard height for a db. And all

What is the installation height of distribution box?

The outdoor distribution box should be firmly installed on the bracket or foundation. The height of the bottom of the box should not be less than 1.0m from the ground, and measures should

Use Walton DB box of correct size and thickness | Walton Blog

Choose the correct sized DB box from Walton Walton distribution boards include all of the above-mentioned safety and design qualities, making them a favorite among electrical experts. Walton

Length Width Height: Master Box Dimensions Like a Expert

Taller boxes that stand upright often have height (or depth) as their biggest measurement, with length and width being smaller. People can call it "height" or

What is the Ideal Installation Height for a Distribution Box

Follow height rules when installing a distribution box. Wall-mounted boxes should be 4.5 to 5.5 feet high. This height makes it easy to reach without bending or

"Guidelines for Household Distribution Box Specifications and ...

Installing a household distribution box requires careful attention to specifications and safety guidelines. Understanding these parameters is vital for ensuring the safety and efficiency of

Distribution boards components

Distribution boards (generally only one in residential premises) usually include the meter (s) and in some cases (notably where the supply utilities impose a TT earthing system and/or tariff

Size determination, installation method and wiring mode

When the distribution box is installed on the wall, it shall be fixed with split bolts (expansion bolts). The bolt length is generally the sum of the buried depth (75 ~

How to Improve the Installation Quality of Distribution Boxes

According to standards, the height from the bottom edge of a distribution box to the floor is generally 1.5m, and for distribution boards, it should not be less than 1.8m.

How to Improve the Installation Quality of Distribution Boxes

The installation of the distribution box must be level and stable. According to inspection standards, the permissible vertical deviation for boxes with a height less than 50cm is 1.5mm, and for boxes 50cm

Contact Us

For more information, pricing, or custom solutions, please contact us:

Website: <https://www.activa.net.pl>

Email: sales@activa.net.pl

Phone: +48 662 748 193

Address: ul. Cybernetyki 7B, 02-677 Warsaw, Poland

This document is for informational purposes only. Specifications subject to change without notice.

