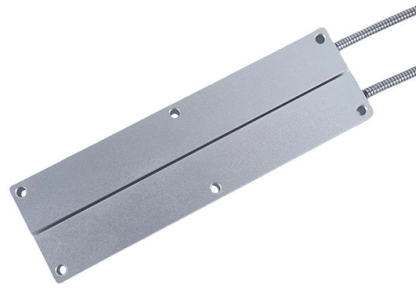


How to install Xindatong mesh cable trays



Overview

Whether you're working on an industrial, commercial, or data center project, this step-by-step guide will help you get it done safely and efficiently. **What You'll Learn:** Preparing the installation area and measuring for accuracy Installing mounting brackets and ensuring proper. Speed up your installation process and add aesthetic touches to even the most difficult angles with bolted and boltless joint fittings options, new snap-on wire mesh cable trays and flexible bending application. Make your work easier with different plating options fixed to the wall and floor thanks. In this video, we'll walk you through the entire process of installing a wire mesh cable tray system, from preparation to completion. **What You'll.** The Wire Mesh Cable Tray system has become the preferred wiring solution for modern data centers, commercial buildings, and industrial facilities due to its superior flexibility, lightweight nature, and rapid installation characteristics. But before you lay the first tray or clamp down a single cable, you need a solid plan. This guide breaks down the process step by step. If playback doesn't begin shortly, try restarting your device.



Article Content

How to Install Wire Mesh Cable Trays

Wire Mesh Cable Tray Installation Guide | Step-by-Step Tutorial Welcome to our wire mesh cable tray installation tutorial! In this video, we'll walk you through the entire Cable Tray Installation

Whether you're building a commercial setup or upgrading an industrial plant, proper cable tray installation ensures neat wiring, safe access, and easy maintenance. But before you lay the first tray

Wire Mesh Cable Tray Installation Guide: How to complete cabling ...

By following these detailed steps, and specifically leveraging the advantages of quick couplers and on-site shaping, your Wire Mesh Cable Tray installation project will achieve maximum

How to Install a Wire Mesh Basket or Cable Tray | CMW

Regarding cable management, correctly installing a wire mesh basket tray or cable tray is crucial for safety and efficiency. The short answer is that you need to measure up, choose the right

How to Install Wire Mesh Cable Trays for Optimal Cable Management ...

In modern industrial and commercial spaces, efficient cable management is critical for maintaining safety, functionality, and an organized work environment. One of the most efficient

Mesh cable tray systems

4 1 Product description OBO mesh cable tray systems stand out through their high load capacity and good ventilation. They can be used universally. The mesh cable trays are suitable for the installation

WIRE MESH CABLE BASKET installation 2014v01.xls

Completely adaptable, WIRE MESH CABLE TRAY SYSTEM is designed to accommodate jobsite changes. Straight sections can be modified to produce bends, tees, crosses or reducers.

Quick Install Guide: Cutting & Bending 10-ft. Mesh Cable Trays for ...

Wire mesh cable trays have emerged as one of the most adaptable and installer-friendly solutions for modern commercial offices, data centers, and smart building infrastructures. Their

Contact Us

For more information, pricing, or custom solutions, please contact us:

Website: <https://www.activa.net.pl>

Email: sales@activa.net.pl

Phone: +48 662 748 193

Address: ul. Cybernetyki 7B, 02-677 Warsaw, Poland

This document is for informational purposes only. Specifications subject to change without notice.

