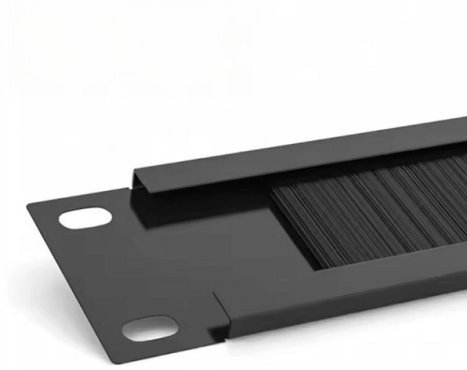


How to connect a fiber optic patch cord to an interface



Overview

Always align fibre connectors correctly—whether you're working with LC, SC, or MTP interfaces. Confirm the polarity of duplex patch leads (A-to-B vs A-to-A), and make sure they match the transceiver or port orientation. Avoid applying excessive force when inserting. Correct patch-cord installation is essential for maintaining low insertion loss, stable return loss, and long-term reliability in both indoor and outdoor fiber networks. Proper handling, routing, cleaning, bend-radius management, and connector alignment ensure that the optical link meets design. You can put in a fibre patch cord at home. You just need to follow easy steps and be careful. Planning helps you pick the right cord for your network. A bulk (multi-strand) fiber cable enters the patch panel and then each fiber strand is separated into individual strands or pairs of strands. These individual strands will then connect to electronic devices. This guide will help you quickly understand the main types of fiber patch cords and how to choose the right solution for your project – and how ZION can support you with stable quality, flexible customization and global supply. Whether you're connecting a data center, a corporate network, or a high-density fiber infrastructure, correct installation methods are essential.

Article Content

Duplex Fiber Patch Cord Selection for Network Cabinets and Links

Duplex Fiber Patch Cord Selection for Network Cabinets and Links duplex fiber patch cord should be selected by connector type, single mode or multimode, polish type, cable length, jacket,

How to Use Fiber Optic Adapters?

Regularly check the connection status of fiber optic adapters and patch cords to ensure the stability and reliability of the network. Introduction to OTRANS Fiber

RoHS Compliant LSZH Sheath Single Mode Simplex LC-FC Fiber Optic ...

RoHS Compliant SM Simplex LSZH LC-FC Fiber Optic Patchcord Fiber Optic Patch Cords are designed to interconnect or cross connect fiber networks within structured cabling systems. Typical fiber

Patch cable

A patch cable, patch cord or patch lead is an electrical or fiber-optic cable used to connect ("patch in") one electronic or optical device to another for signal routing.

12-core MPO OM4 Multimode Patch Cord, LSZH Optical Fiber Patch Cord

MP is a multi-core optical fiber interface standard, mainly used for connecting optical modules, optical switches, servers and other devices. It features high density and low loss, and can simultaneously

Cables, Adapters, Fiber, Network Add-ons & Tools | Computer Cable

Cables, Adapters, Fiber, Network Add-ons & Tools This 20m Multimode Duplex OM4 Fiber Optic Patch Cable (50/125) - LC to LC has ceramic ferrules and a 50/125 micron core, this cable is suitable for

METZ CONNECT | Home

Fiber Patch Panels For the distribution of structured cabling, we offer patch panels, module frames or subracks with suitable accessories for fiber optic connections.

Fiber testers : Equipment and tools | Fluke Networks

Technicians use various tools to install, maintain, and troubleshoot fiber cabling: detection and verification testers, certification testers, inspection cameras, cleaning supplies, certification testers, and advanced optical time domain reflectometer (OTDR) instruments for troubleshooting and analysis of

Fiber Optic Patch Cord Manufacturer Guide for Network Buyers

Fiber Optic Patch Cord Manufacturer Guide for Network Buyers fiber optic patch cord manufacturer should be selected by connector type, single mode or multimode fiber, polish type,

Contact Us

For more information, pricing, or custom solutions, please contact us:

Website: <https://www.activa.net.pl>

Email: sales@activa.net.pl

Phone: +48 662 748 193

Address: ul. Cybernetyki 7B, 02-677 Warsaw, Poland

This document is for informational purposes only. Specifications subject to change without notice.

