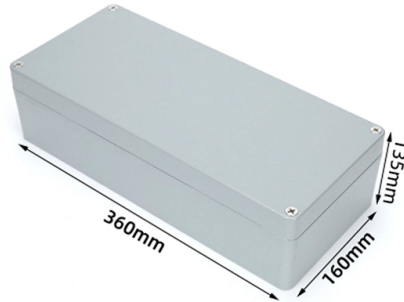


Finland Core Switch 400G



Overview

A compact 1U 400G switch built for AI clusters, storage fabrics, and high-speed aggregation, featuring four 400G QSFP56-DD ports, dual 10 Gigabit Ethernet, and RouterOS v7. With hot-swap power supplies, robust cooling, and low power consumption, it delivers ultra-high bandwidth, wire-speed. The HPE Networking Comware Switch Series 5965 is a high-performance, high-density top-of-rack (ToR) switch designed for enterprise data centers, cloud service providers, and telco environments. All pricing* displayed is indicative; the reseller sets the final transactional price and may include. FS launches 400G Ethernet Switch to cater for industry leading 400G rate, future development trend and Open Network Install Environment (ONIE), which offers you rich choice of port speed and density including 25G, 40G, 50G, 100G, 200G and 400G enabling consistent network architectures and ensure. Hyperscale datacenter networks are under continuous pressure to provide massive scale and capacity. 400G Ethernet is a key technology building block to evolve the infrastructure to support the proliferation of mobile and cloud-based applications. In response to the explosive growth of data, the 400G switch aims to meet the network demands of hyperscale data centers and cloud computing service provider. A new modular chassis design.

Article Content

AIS800-64D:High-Performance ai switch for Data Centers

A next-generation, highest-capacity switch for data center spine use case. Breakout options include 2 x 400G, 4 x 200G, and 8 x 100G per port, with a maximum of

EXP400-32X Data Center Switch

32 x 400G QSFP112 ports, each can breakout to 2 x 200G, or 4 x 100G. High performance, low power, low latency, fully programmable SDN data center switch designed for data center, cloud, and AI

CRS812 DDQ Switch - 50G, 200G & 400G Netzwerkleistung

Der CRS812 DDQ Switch bietet leistungsstarke 50G, 200G und 400G Ports, dual-redundante Stromversorgung, 4x Hot-Swap Lüfter und eine Quad-Core 2 GHz ARM CPU - ideal für Top-of

Products:400G Data Center Switch SNJ-62x0-640F-Alpha Networks Inc.

Guided by core values of Ethics, Customer Value, Agility and Network Performance; Alpha Networks Inc. is dedicated to balancing technology with humanism as it pursues a company-wide commitment

H3C 400G Ethernet Technology White Paper-6W100

· The aggregation switches S9820-8C connect to the core switches S12500R through 400G links. The preceding architecture can also be applied to the leaf-spine-border architecture of

Edgecore unveils high-performance 400G spine switch for data centers

The switch features 32 ports capable of 400G speeds, allowing for high-density 100/400 GbE spine-to-spine or spine-to-leaf interconnections. This new hardware offering aims to address the

400Gb Data Center Switches

FS 400G data center switches offer high speeds and port densities to meet the network deployment requirements of various scenarios and the evolving requirements of next-generation data center

HPE Networking Comware Data Center Switch 64p QSFP-DD 400G

High-performance 25.6 Tbps, high-density access, aggregation or core switch designed for enterprise data centers, cloud service providers, and telcos. Supports a maximum of 64 400G QSFP-DD®

Edgecore Networks Introduces the Ultra High-Capacity 400G Switch

Edgecore Networks is the leader in open networking, providing a full line of open 1G-400G Ethernet OCP Accepted™ switches, core routers, cell site gateways, virtual PON OLTs, packet

CRS812 DDQ Switch - 50G, 200G & 400G Netzwerkleistung

400G - Dieser Switch ist Ihr nächster Schritt nach vorn - eine leistungsstarke, effiziente und kostengünstige Möglichkeit, 50G, 200G und 400G in Ihr Rack zu integrieren. Quad-Core-2-GHz

Arista Platforms 400GbE

Arista 7388X5 and 7368X4 Series are 4RU high density 100G and 400G modular data center switches with wire speed layer 2 and layer 3 features, and advanced features for software driven cloud

Contact Us

For more information, pricing, or custom solutions, please contact us:

Website: <https://www.activa.net.pl>

Email: sales@activa.net.pl

Phone: +48 662 748 193

Address: ul. Cybernetyki 7B, 02-677 Warsaw, Poland

This document is for informational purposes only. Specifications subject to change without notice.

