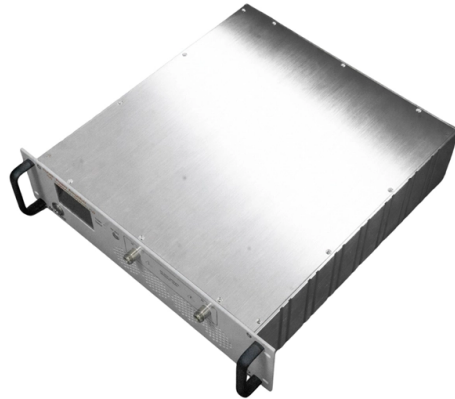


Fiber optic fusion splicing without a junction box



Overview

Learn how to splice fiber optic cable using fusion splicing with this complete step-by-step guide. 652), cost analysis, and FAQs for network engineers and installers. The guide provides the complete workflow, covering safety precautions, tool selection, fiber preparation, fusion operation, quality control, and. Fiber optic joints or terminations are made two ways: 1) splices which create a permanent joint between the two fibers or 2) connectors that mate two fibers to create a temporary joint and/or connect the fiber to a piece of network gear. Splicing is typically required during cable installation, maintenance, or network expansion. 1. This virtual hands-on page will take you through the steps involved in the process. A mechanical splice is a junction of two or more optical fibers that are aligned and held in place by an assembly that holds the fiber in alignment using an index matching fluid.

Article Content

EPCOM's Premier Fiber Optic Distribution Box Choice

A Fiber Optic Distribution Box is the cornerstone of any modern, high-speed communication network, acting as a critical junction for managing and protecting delicate fiber optic

8 core fiber optic splice box

An 8-core fiber optic splice closure is specifically designed to protect, organize, and manage spliced fiber optic cables. These enclosures serve as secure housing units where individual optical fibers are

Zonejoy Fiber Optic Extension Cable OTDR Single Mode Waterproof ...

GOOD PERFORMANCE: The optical fiber test cable has excellent sealing performance, waterproof, antifouling, explosion proof, and has long service life. **EASY OPERATION:** There is no fusion splice

Fiber optic splicing box-AliExpress

A fiber optic splicing box protects spliced fibers from environmental damage, ensuring signal integrity. This guide explains its use, selection criteria, common issues, and user feedback for both indoor and

How to Use Fiber Distribution Box: A Comprehensive

A fiber distribution box (FDB) functions as a central hub in fiber optic networks where the main cable is split into multiple individual fibers for distribution

FiberOptics

Fiber Optic products. We carry Fiber Optic fusion splicers, cleavers, OTDRs, cables, panels, laser sources, power meters, and many other Fiber Optic products for

Indoor junction box, Indoor terminal box

F2H-OTB-A Series Indoor Optical Termination Box is used as terminal equipment of fiber optic cable for optical fiber fixation, fusion and patching on wall. Features: 1.

Fiber Optic Fusion Splicer Heat Shrink Tubing, Double

Steel needle chamfering design is crucial for protecting the inner wall of Heat Shrink Tubing during fiber optic splicing. Our design ensures anti-static and non-stick

10 Costly Fiber Optic Cable Installation Mistakes to Avoid in 2026

Avoid costly fiber optic installation failures. Learn the 10 critical mistakes in splicing, bend radius, connector cleaning, and cable handling that ruin enterprise network performance.

Amazon : Fiber Junction Box

Add to cart Fiber Optic Junction Box, 2 in 2 Out Splice Box, Mini Small Square Type 12 Core Outdoor Waterproof Protection Box Add to cart 4 Core FTTH Fiber Distribution Box, 4 Port Fiber Distribution

(PDF) Fiber Optic Splicing Playbook v3.5

The Fiber Optic Splicing Playbook v3.5 provides field technicians and managers with standardized procedures for FTTH builds, PPE readiness, splice enclosure selection, waste management, and

Fiber-optic communication

Modern fiber-optic communication systems generally include optical transmitters that convert electrical signals into optical signals, optical fiber cables to carry the

12 Ports Fiber Splice Termination Box without Adapter Slot

The 12 port fiber splice box is a compact wall-mount enclosure designed for splice-only distribution in FTTH and P2P networks. Designed without adapter slots, this

Huawei fiber optic terminal box-AliExpress

The Huawei Fiber Optic Terminal Box is a reliable device for terminating and managing fiber optic cables in FTTH networks, offering compatibility, secure cable management, and support for various adapter

12 Core Fiber Distribution Box, 12 Port FTTH

About this item Feature: 12 ports optical fiber distribution box is used for the fusion splicing, splitting, wiring transmission and other functions of the optical

The FOA Reference For Fiber Optics

Fusion splicing machines are available in two types that splice a single fiber or a ribbon of 12 fibers at one time. Virtually all singlemode splices are fusion.

Contact Us

For more information, pricing, or custom solutions, please contact us:

Website: <https://www.activa.net.pl>

Email: sales@activa.net.pl

Phone: +48 662 748 193

Address: ul. Cybernetyki 7B, 02-677 Warsaw, Poland

This document is for informational purposes only. Specifications subject to change without notice.

