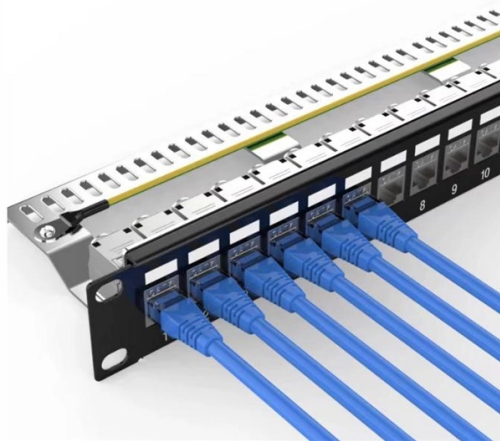


Does the terminal box have Wi-Fi How do I connect it



Overview

To connect the Square Terminal to a Wi-Fi network if you are signed in to the device: Tap the three horizontal lines > tap Settings > Device > Network. Select Wi-Fi and choose a secure network. (If you don't have your merchant card, please get in touch with our technical support). First, press the F1 key on your Move3500 terminal. Open the Starlink App > Settings > Router >. This white box connects to a fibre-optic cable that runs to your house and enables you to access our FTTP fibre network for broadband and voice. There are several lights on the ONT, when these lights change colour or flash, it means something is happening. What do the lights on the Openreach fibre. If you are replacing existing equipment as part of a repair, locate your existing modem and take a picture of the back of the device, noting which cables are connected to LAN and COAX ports, so you can reconnect those later. Page 3 Step 1: Locate and identify the Fibre Terminal Locate the Fibre.

Article Content

Fix Android TV Box not connecting to wifi

If your Android TV Box WiFi is not connecting, keeps disconnecting, or has slow or unstable internet, this step-by-step guide will help you troubleshoot and solve the issue.

Solved: Does the new Square Terminal run on its own wifi o...

The new Square Terminal does not have its own mobile data/data plan so you'd need to connect it to the internet to take payments with it. You can connect the Terminal to the internet a few

Connect to WiFi network through Ubuntu terminal

If the access point uses WPA/WPA2, you'll have to use another method to connect, found here: [How do I connect to a WPA wifi network using the command line?](#) Also, might I ask, is there a reason why

FTTH Terminal Box and Optical Accessories: A Comprehensive Guide

FTTH Technology Overview Importance of FTTH Terminal Boxes FTTH terminal boxes, also known as fiber to the home terminal boxes or FTTH distribution boxes, are crucial components

How to set up internet and network connection on V660P terminal?

This article is a guide to set up your wifi and internet connection on the Verifone V660P terminal. 1. Wi-Fi Network Swipe down from the Notification bar at the top of the screen and tap and hold the Wi-Fi

Openreach modem (ONT) explained: Ports and models

If you are a fibre customer, it's likely you'll have an Openreach modem (or ONT) installed. This white box connects to a fibre-optic cable that runs to your house

How to connect terminal to WiFi

In this article you can read how to connect your terminal to WiFi. The process to be followed varies based on the terminal type you have. Choose your terminal type from the list below and follow the

How to Connect to WiFi from the Terminal in Ubuntu

How do I connect to a Wifi network to have the Internet from the terminal? Well, that's the objective of this post, to learn how to connect to Wifi from the terminal on Ubuntu.

TP-Link Deco Mesh Wi-Fi: Common Questions Answered

TP-Link Deco mesh uses complex algorithms to automatically route data along the fastest path, adapting to your Wi-Fi needs without any manual intervention. Deco is an internet-sharing

Fetch Box User Guide: How to Connect and Troubleshoot Wi-Fi

In this Fetch Box User Guide, you will learn how to connect and troubleshoot Wi-Fi on your Fetch Box. If you have reliable Wi-Fi in the room with your TV and Fetch Box, you can use this wireless ...

How to Connect Xiaomi Mi TV Stick & Box to WiFi Without Remote

Additionally, I demonstrated how to use a wired WiFi connection to get your Xiaomi Mi TV Stick or Box online. By connecting via a wired Wi-Fi, the TV automatically connected to the internet ...

How do I connect my Sky+HD box to my broadband router using

All you need to do is press the WPS button on your Sky box and then within 30 seconds press the WPS button on your broadband router (if it's a Sky router, it may be on the side). Providing

Standard 4 X

To secure your Starlink WiFi network, use the Starlink App to rename your Starlink WiFi network and create a WiFi password. Open the Starlink App > Settings > Router > enter desired WiFi network

How Do I Connect My Android Box to Wi-Fi: A Simple Guide

If you own an Android box and are wondering how to connect it to Wi-Fi, look no further. This simple guide will walk you through the step-by-step process, ensuring that you can enjoy all the

How to Connect Square Terminal to a Wi-Fi Network

I wanted to take a minute to share the steps to connect Square Terminal to a Wi-Fi network. I've also included some information about the different types of internet networks that are

How to connect your Pax A920 or A80 to Wi-Fi

After selecting the desired Wi-Fi network, input the Wi-Fi case sensitive password and select "Connect". When the terminal has successfully connected to the Wi-Fi

How to connect a Tyro EFTPOS machine to WiFi

If you have any questions about network requirements or issues with connecting the EFTPOS machine to WiFi, our local support team is available for general enquiries on 1300 00 TYRO (8976) from 7am

How to connect your illico terminal | Videotron

How to connect your terminal to an HD television? To connect a terminal to an HD television, you have the choice between two connections: HDMI or with component cables. HDMI connection

Answered: How do I connect my Sky+HD box to my broadband rou.

I have a message on my screen saying I cannot access Catch Up or other facilities on my Sky+HD box without connecting to my broadband. How do I do this preferably using WiFi as the

Contact Us

For more information, pricing, or custom solutions, please contact us:

Website: <https://www.activa.net.pl>

Email: sales@activa.net.pl

Phone: +48 662 748 193

Address: ul. Cybernetyki 7B, 02-677 Warsaw, Poland

This document is for informational purposes only. Specifications subject to change without notice.

