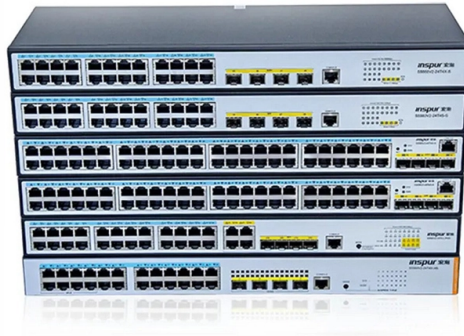


## Check the model number inside the distribution box



### Overview

Many cable box manufacturers design their boxes with the model and serial numbers displayed on the front of the box near a corner. It is also the area where you enable the filters per message type. Log into the respective ALE reference client 4xx, as this is the reference client where we maintain our. Check and update your labels often. Use strong materials like vinyl or polyester. This helps labels last and stay easy to read. Always put safety. Your cable company, vendors and others use your cable box's model number as a product identifier in a variety of situations. For example, this number is useful if you need help acquiring a manual, locating troubleshooting instructions, scheduling a repair appointment or getting a replacement box. Our service department uses this information, along with the. Check electrical parameters: First understand the basic electrical parameters of Distribution box so that you can have a general understanding of the capacity and performance of the distribution box. Log in to your ServiceBox account.

## Article Content

### Distribution Box

It's a good idea to record the model and serial number(s) of your equipment and the date you received it in the User Guide. Our service department uses this information, along with the manual number, to

### Model / Serial Number On Fridge Or Freezer | Whitegoods Help

Quick Answer The model and serial number on most modern fridges, freezers, and fridge-freezers is on a label inside the appliance - usually on the inner side wall of the fridge

### Cracking the Code: Where to Find Model and Serial Numbers

Remember to check the product packaging and documentation, device or product label, online resources, and device settings or software to find the model and serial numbers.

### Solved: Re: Filters in Distribution Model

Configuring the Distribution Model (BD64) The customer distribution model is the area where you link your message types to the logical systems. It is also the area where you enable the

### The Complete Guide to Distribution Box: Installation, Types & More

What's the difference between a distribution box and a sub-panel? A distribution box typically refers to the main electrical panel that receives power from the utility service. A sub-panel is

### How to Read and Interpret Your Distribution Box Labels

You might feel a little nervous about opening your distribution box, but you can do it safely if you follow some simple steps. Let's walk through what you need to know before you start.

### How to Find the Model Number of a Cable Box

Many cable box manufacturers design their boxes with the model and serial numbers displayed on the front of the box near a corner. Additionally, you can find important details about the box, including the

### Identifying a Set-top Box model number

Most set top boxes and satellite receivers will have a sticker attached to the back or underside of the device. This should contain your model number amongst other information.

### Electrical Distribution Box Diagrams | PDF | Power

This document provides a list of components in an electrical distribution box with their names and associated wiring diagrams. It includes tables of diodes, fuses,

Solved: ALE

Hi Distribution Model - A model that describes the ALE message flow between logical systems. Applications and the ALE distribution service layer use the model to determine receivers

## Contact Us

For more information, pricing, or custom solutions, please contact us:

Website: <https://www.activa.net.pl>

Email: [sales@activa.net.pl](mailto:sales@activa.net.pl)

Phone: +48 662 748 193

Address: ul. Cybernetyki 7B, 02-677 Warsaw, Poland

This document is for informational purposes only. Specifications subject to change without notice.

