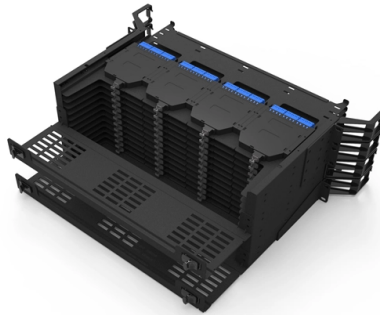


# Cable tray marking spacing requirements



## Overview

Support spacing for cable trays must align with the manufacturer's instructions, as outlined in NEC 392. Generally, standard trays require supports every 6 to 10 feet, while heavy-duty, long-span trays can handle distances of up to 20 feet between supports. Maintain spacing or to keep cables in place when the tray is erect the minimum bend radius for cables as they exit the bottom of the cable tray. A rung spacing of 6 to 9 inches (150 to 230 mm) is preferable when the cable tray is used for instrumentation and control applications that require. The spacing between trays, whether horizontal or vertical, depends on various factors like cable type, environment, and tray material. Proper installation can significantly reduce electromagnetic interference, prevent fire hazards, and improve overall efficiency. This article provides an in-depth. cable trays are equivalent. The mechanical and electrical characteristics, tests, certifications, overall quality management, recommendations mentioned in this technical guide only apply to our own cable management ranges and cannot under any circumstances be transposed to silicone, overheating or. We recognize the need for a complete cable tray reference source for electrical engineers and designers. The information has been organized for. This standard outlines the construction requirements, testing methods, and performance parameters for cable trays and related support systems. Whether you're designing a new facility or upgrading an existing electrical infrastructure, understanding and applying the IEC standard for cable tray is. The NEC requires that cable trays must be supported by members at an interval specified by the cable tray manufacturer, but not more than 5 feet for horizontal runs to support the weight of the cables and other loads.

## Article Content

12-SDMS-06

Cable tray supports shall have a maximum of 6 m spacing on horizontal run and 2.4 m spacing on the vertical runs. However, when the tray system is supported from building structure with rods, brackets

CABLE TRAY

Supports for cable trays should provide strength and working load capabilities sufficient to meet the load requirement of the cable tray wiring system. Consideration should be given to the loads associated

Session 13 - Wiring Methods & Cable Standards

Typical IEC Wiring Specification Multicore cables on racks or trays may be bunched in a maximum of two layers. HV and LV single core cables shall be laid in trefoil groups with 150 mm clear spacing

Codes and Standards | Cable Tray Institute

This standard specifies the requirements for nonmetallic cable trays and associated fittings designed for use in accordance with the rules of the Canadian Electrical Code (CEC) Part 1, and the National

Best Practice Guide to Cable Ladder and Cable Tray Systems

This guide covers cable ladder systems, cable tray systems, channel support systems and associated supports intended for the support and accommodation of cables and possibly other electrical

LEGRAND CABLE TRAYS TECHNICAL GUIDE

Not all cable trays are equivalent. The mechanical and electrical characteristics, tests, certifications, overall quality management, recommendations mentioned in this technical guide only apply to our

Cable Tray Installation Rules (NEC 392) - Electrical Trader

Support spacing for cable trays must align with the manufacturer's instructions, as outlined in NEC 392.30 (A). Generally, standard trays require supports every 6 to 10 feet, while

Cable tray manual

There are several sections which cover the requirements for the use of single conductor cables in cable tray even though they only comprise a small percentage of cable tray wiring systems.

Cable Tray Technical Guide A practical guide to product selection and ...

Cable Tray Technical Guide A practical guide to product selection and installation This guide for engineers and installers has been developed by ABB as a practical reference regarding cable tray

Guide to cable support systems

The systems allow large support spacings of wide span systems or the multilayer arrangement of cable trays and cable ladder systems. The systems comprise hanging supports, support brackets, head

#### GUIDE CABLE TRAYS TECHNICAL

In accordance with its continuous improvement policy, Legrand reserves the right to change the specifications and illustrations without notice. All illustrations, descriptions and technical information

Cable Support Distances

This provides distances for cables based on their diameter and cable type. Prysmian was instrumental in providing this information and an extract is provided in this document.

Cable tray manual

INTRODUCTION The B-Line series Cable Tray Manual was produced by our technical staff. We recognize the need for a complete cable tray reference source for electrical engineers and designers.

Document DICOS

Attaching a channel cable tray by using the method illustrated in Figure 3-88 maintains the electrical requirements, and the bolted mechanical connection while providing a practical method for dropping

Resources for Cable tray and ladder systems

Submittals for cable ladder and tray Eaton's submittal builder tool for B-Line series cable ladder and tray allows you to easily filter, select and download straight

#### GUIDE CABLE TRAYS TECHNICAL

Specifies requirements for metal cable trays and associated fittings designed for use in accordance with the rules of Canadian Electrical Code, Part I and the National Electrical Code®

#### CABLE TRAY SYSTEMS GUIDE

Cable Tray Systems Guide HUBBELL Hubbell Wiring Device-Kellems and Hubbell Premise Wiring are divisions of Hubbell Incorporated, a U.S. headquartered manufacturer with over 130 years of

Compliance Requirements for Instrument Cable Trays

Installing instrument cable trays properly and in compliance with relevant standards is crucial to ensure safety, functionality, and durability. Below is a detailed guide

## Contact Us

For more information, pricing, or custom solutions, please contact us:

Website: <https://www.activa.net.pl>

Email: [sales@activa.net.pl](mailto:sales@activa.net.pl)

Phone: +48 662 748 193

Address: ul. Cybernetyki 7B, 02-677 Warsaw, Poland

This document is for informational purposes only. Specifications subject to change without notice.

