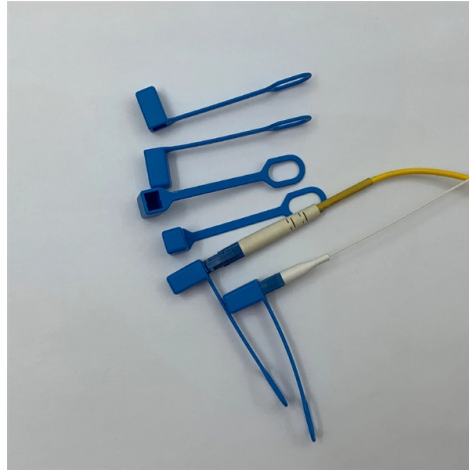


AC contactor configuration distribution box



Overview

In order to avoid such a situation, the AC contactor of the stainless steel distribution box shall be energy-saving AC contactor (similar to cj20si type), and pay attention to the connection between the coil voltage of the AC contactor and the corresponding terminal of. In order to avoid such a situation, the AC contactor of the stainless steel distribution box shall be energy-saving AC contactor (similar to cj20si type), and pay attention to the connection between the coil voltage of the AC contactor and the corresponding terminal of. The Allen-Bradley® Bulletin 400 Definite Purpose contactors are specifically designed for applications such as air-conditioning, refrigeration, resistive heating, data processing and food service equipment, pumps, and compressors. Box lugs are standard on 40 A contactors and larger. A maximum of. The Air Conditioning Distribution Box is a critical electrical component that centralizes power distribution for cooling systems while providing protection and ease of maintenance. This article explains what a distribution box does, typical configurations, sizing guidelines, installation. In Normal Mode HV Positive and Pre The Charge battery pack Mode internal is required high- to avoid voltage high bus inrush is completely currents disconnected to DC Link Capacitor. from the load at both terminals when completely not in High use. Inrush current might in link damage This batteries. The AC contactor modules Atex & IECEx, are devices to control circuits or motor circuits permitting or not allowing the operation of the circuit. These contactors guarantee the. Our AC distribution boxes are equipped with the true AC breaker and AC SPD from 220V-400V.

Article Content

Selection standard of AC contactor installed in stainless

When selecting AC contactor, its insulation grade shall be grade A or above, and the rated current of its main circuit contact shall be greater than or equal to the load

Power Distribution Equipment

Power Distribution Equipment is a term generally used to describe any apparatus used for the generation, transmission, distribution, or control of electrical energy.

How to Wire a Three Phase Contactor: A Detailed Wiring Diagram

Learn how to wire a three-phase contactor with the help of a detailed wiring diagram. This guide provides step-by-step instructions and illustrations to help you understand the process.

High Voltage Contactor Control

Main positive contactor and pre-charge contactor & resistor can be combined together replaced by a channel solid state switch whilst using PWM control for pre-charging the DC link capacitor.

INSTRUCTIONS FOR USING CONTACT CONFIGURATION AC

Carefully review the technical specifications on the contactor's nameplate, including voltage, rated current, coil voltage, and other details, before selecting and installing it.

Definite Purpose Contactor Specifications

The Allen-Bradley® Bulletin 400 Definite Purpose contactors are specifically designed for applications such as air-conditioning, refrigeration, resistive heating, data processing and food service equipment,

Air Conditioning Distribution Box: Essential Guide to Function, Types ...

This article explains what a distribution box does, typical configurations, sizing guidelines, installation considerations, and maintenance tips to help facility owners and homeowners

GUIDE Installation contactors Modular DIN rail components

GUIDE Installation contactors Modular DIN rail components — Available in a wide range from 16 to 100 A and featuring tool-free accessories, ABB's installation contactors are widely used for switching and

High Voltage Contactor Control

Contactors in EV/HEV Typically in PDU (power distribution unit) Main and controlled contactors by VCU (vehicle control unit) Pre-charge contactor DC charge contactors AC charge contactors Auxiliary

6. AC wiring

6.4. AC cabling In a house or factory installation, the incoming electricity is divided into groups, usually on a distribution board. The diameter of the electrical wiring for each AC circuit (group) must be

The Ultimate Guide to Circuit Breaker Wiring

Messy distribution boxes are dangerous and very hard to fix. This guide shows you how to organize circuit breaker wiring properly. You will learn to build a safe,

ESB and EN installation contactors Application handbook

s, the installation contactors are used on the AC side. ESBs feature the MDRC design and therefore are well-suited for the application of power distribution. The products offer a direct current magnet system,

Contact Us

For more information, pricing, or custom solutions, please contact us:

Website: <https://www.activa.net.pl>

Email: sales@activa.net.pl

Phone: +48 662 748 193

Address: ul. Cybernetyki 7B, 02-677 Warsaw, Poland

This document is for informational purposes only. Specifications subject to change without notice.

